

# R.W. CONKLINSTEEL

100% Melted & Manufactured in the USA

1-888-CONKLIN (266-5546)

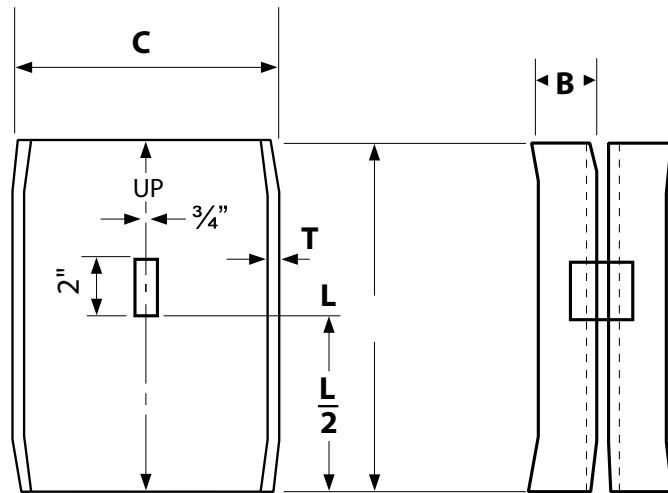
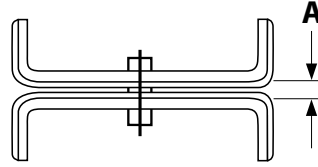
www.conklinsteel.com



## H-PILE SPLICERS Specifications



H-Pile Splicers are used to help with alignment of H-Piles. Splicers also significantly provide an additional weld area when splicing.



**NOTE:** In order to achieve the full value of the pile in bending, special welding instructions are required.

H-PILE SECTION SIZE

	FLANGE WEB	MINIMUM WELD SIZE	TOTAL INCHES OF WELD*	A (±1/16)	B (±1/16)	C (±1/16)	L (±1/16)
	in	in	in	in	in	in	in
<b>HP 14</b> x 117 x 102 x 89 x 73	13/16	7/16	50	15/16	2 3/4	12 7/16	16
	11/16	7/16	50	15/16	2 3/4	12 7/16	16
	5/8	3/8	49	11/16	2 3/4	12 7/16	16
	1/2	3/8	49	5/8	2 3/4	12 7/16	16
<b>HP 13</b> x 100 x 87 x 73 x 60	3/4	7/16	46	7/8	2 3/4	11 7/16	15
	11/16	7/16	46	11/16	2 3/4	11 7/16	15
	9/16	5/16	46	5/8	2 3/4	11 7/16	15
	7/16	3/8	46	9/16	2 3/4	11 7/16	15
<b>HP 12</b> x 84 x 74 x 63 x 53	11/16	7/16	44	3/4	2 1/2	10 3/4	14
	5/8	3/8	44	11/16	2 1/2	10 3/4	14
	1/2	3/8	44	5/8	2 1/2	10 3/4	14
	7/16	5/16	44	1/2	2 1/2	10 3/4	14
<b>HP 10</b> x 57 x 42	9/16	5/16	40	5/8	2	8 3/4	12
	7/16	5/16	40	1/2	2	8 3/4	12
<b>HP 8</b> x 36	7/16	5/16	36	1/2	1 3/4	7	10

Splicer is made from 3/8 inch thick steel. \*Includes eight 5/16 inch x 2-1/2 inch fillet welds near corners of splicer.